

# MONTHLY MEMBERSHIP PROGRESS REPORT

District 41

Results as of: 5/31/2020

GMT:

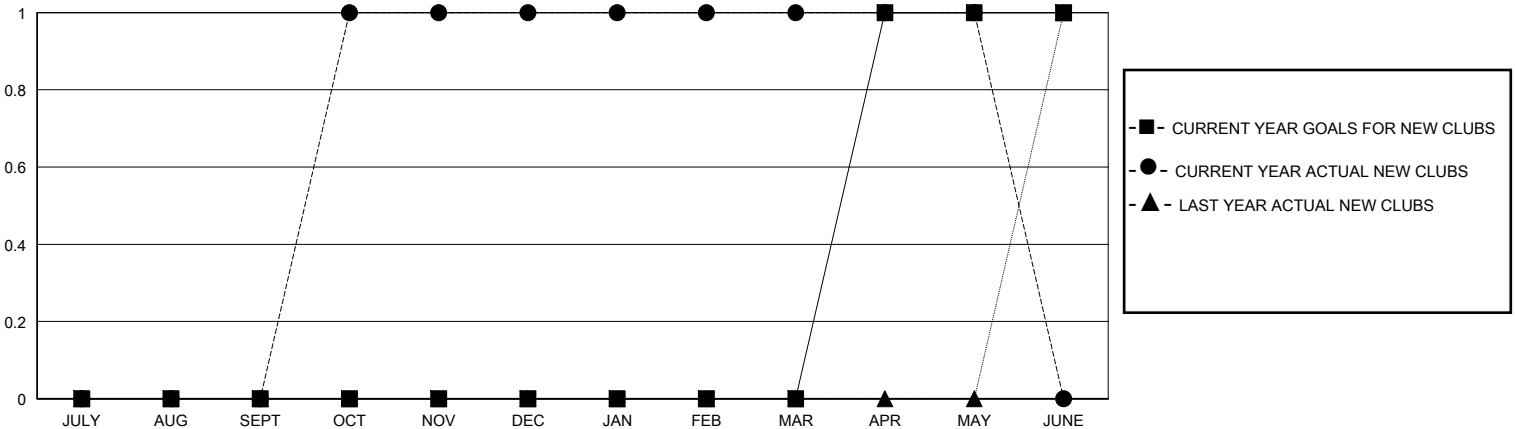
LOCATION MAINE

GMT CA

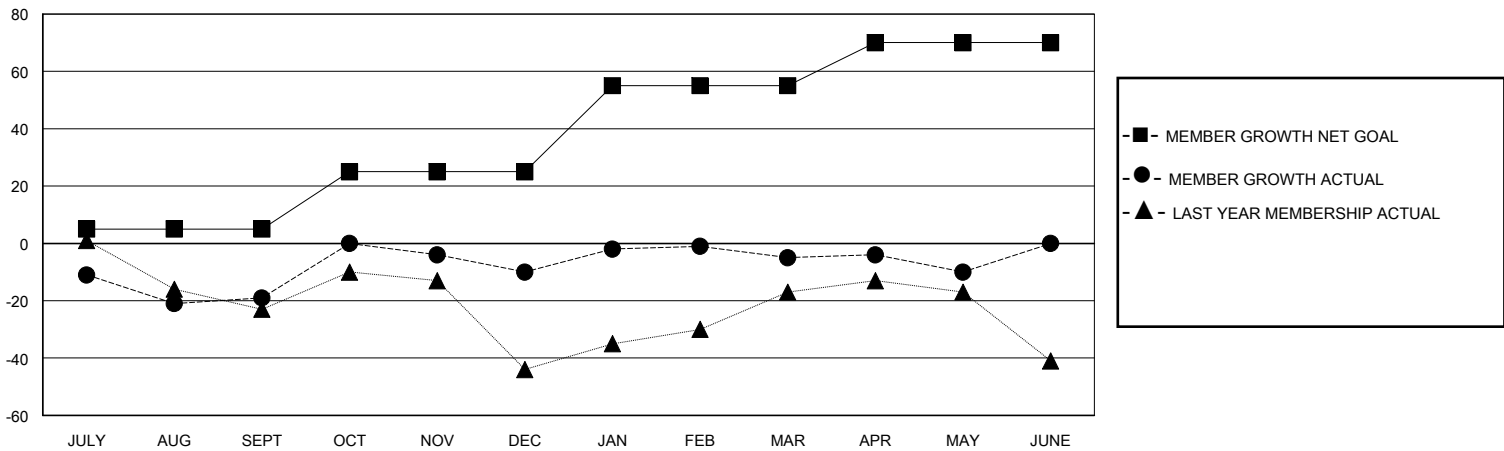
Clubs			
RESULTS FOR 2019-2020			
QUARTER	NEW CLUB GOAL	NEW CLUBS	DROPPED CLUBS
JULY/AUG/SEPT	0	0	1
OCT/NOV/DEC	0	1	0
JAN/FEB/MAR	0	0	0
APR/MAY/JUNE	1	0	0

Members			
RESULTS FOR 2019-2020			
QUARTER	MEMBER GROWTH NET GOAL	MEMBER GROWTH ACTUAL	DROPPED MEMBERS ACTUAL (including transfers)
JULY/AUG/SEPT	5	31	46
OCT/NOV/DEC	20	61	49
JAN/FEB/MAR	30	47	40
APR/MAY/JUNE	15	10	14

GOALS AND ACTUAL NEW CLUBS CUMULATIVE



GOALS AND ACTUAL MEMBERS CUMULATIVE



DROPPED CLUBS: 1

42 CLUBS OF 74 ADDED 1 OR MORE NEW MEMBERS

GENDER DISTRIBUTION

MALE 1,406 (67.86%)  
FEMALE 666 (32.14%)

DROPPED MEMBERS

DECEASED	32
CLUB CANCELLED	0
OTHER	117
<b>TOTAL</b>	<b>149</b>

[CLICK HERE FOR CUMULATIVE MEMBERSHIP DATA](#)

TOTAL FAMILY UNIT MEMBERS	485
FAMILY MEMBERS PAYING HALF DUES	250